

Phosphorus Bronze Sleeve

Features

- Single Mode Quality Can Be Used For Singlemode or Multimode Applications
- For PC or APC Connector Adapter Applications
- Sleeves Meet IEC and NTT Specifications
- Various Lengths Available

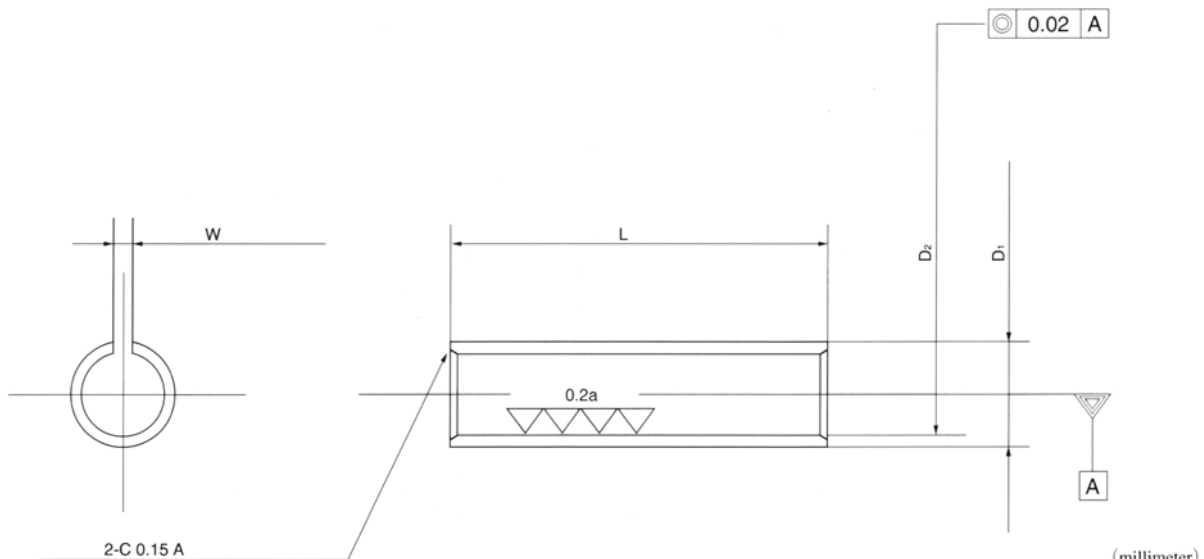


Part Number: FS00023 - Standard FC, SC split sleeve

ID ϕ 2.48mm, OD ϕ 3.06mm, **Length 11.4 mm**

Part Number: FS00221 - ST split sleeve

ID ϕ 2.48mm, OD ϕ 3.06mm, **Length 10.1 mm**



(millimeter)

Material	Phosphor bronze	Phosphor bronze	Phosphor bronze
Outer dia. (D1)	ϕ 1.60 (MU)	ϕ 2.48 (D4)	ϕ 3.06 (SC/FC/PMF)
Inner dia. (D2)	ϕ 1.23	ϕ 1.98 \pm 0.01	ϕ 2.48 \pm 0.01
Length (L)	6.88 \pm 0.1	10.4 \pm 0.05, 8.0 \pm 0.05 9.88 \pm 0.05, 9.2 \pm 0.05	11.4 \pm 0.05, 10.1 \pm 0.05
Slit width (W)	0.2 \pm 0.05	0.4 \pm 0.05	0.5 \pm 0.05, 1.0 \pm 0.05
Chamfering	2-0.1 \pm 0.05	2-0.15 \pm 0.05	2-0.15 \pm 0.05
Angle of chamfer (A)	2-45°	2-30°, 45°	2-30°, 45°
Roughness Inn. sur.	Ra: 0.2 μ m	Ra: 0.2 μ m	Ra: 0.2 μ m
Retention force	100-200grs.	300-600grs.	200-600grs.
Insertion loss (Singlemode)	MAX. 0.3dB	MAX. 0.3dB	MAX. 0.3dB