

Product Snapshot

Applications	Interconnect & Cross-Connect Patch, Splice Central Office, Head End, LAN, Data Center
Configurations	Jumpers (2 ends) - Patch Cords Pigtails (1 end) - Splicing Pre-terminated Fibers
Connector Types	Styles: SC, LC, FC, ST, Ruggedized Connector Polishes: UPC (Ultra PC), APC (Angled PC)
Fiber Types	Singlemode (BendBrightXS, BendBright) Multimode (MaxCap 10 GbE, HiCap 1 GbE, 50um or 62.5um)
Cable Types	Riser (OFNR), Plenum (OFNP)
Cable Diameters	Simplex: 3.0 mm, 2.0 mm, 1.6 mm, 900 um Duplex: 3.0 mm Zipcord, 2.0 mm Zipcord

Reliable patch cords & pigtails for everywhere you need to connectorize fibers.

FiberSource patchcords are compatible with all industry applications and fully compliant to industry standards including Telcordia GR-326. Patchcords are manufactured to rigorous quality standards to assure a high degree of precision. A fully automated polishing process ensures optimum geometries for radius of curvature, apex offset, and fiber undercut tolerances. Precise tolerance control results in reliable low-loss connections and rematings over the long term and under a wide range of operating conditions. All Draka patchcords with singlemode or multimode fibers are available in various cable diameters and Hybrid assemblies are also available.

Features & Benefits

- [+] High-quality automated polishing process gives optimal geometries for better connection and reconnection performance
- [+] Tight tolerance control for reliable, low-loss connections and reconnections
- [+] Wide range of connectors that support multiple applications.

SC-UPC

- [+] Stable, pull-proof
- [+] Push-pull mounting
- [+] 2.5 mm zirconia ceramic ferrule
- [+] Keyed for repeatable connections
- [+] Widely used for telecommunications



SC-UPC



FC-APC

Features & Benefits

SC-APC

- [+] Same mechanical design as SC-UPC
- [+] Low return loss needed for CATV applications
- [+] Physical contact polish at 8 degrees

LC-UPC/APC

- [+] LAN and high-density applications
- [+] 1.25 mm zirconia ceramic ferrule
- [+] RJ-45 latching style
- [+] Duplex patchcords meeting simplex version specifications
- [+] APC – physical contact polish at 8 degree

FC-UPC/APC

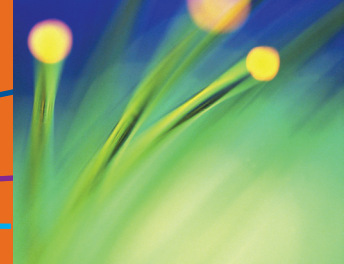
- [+] Compatible with JIS specification
- [+] Stable, pull-proof
- [+] 2.5 mm zirconia ceramic ferrule
- [+] Keyed for repeatable connections
- [+] APC – physical contact polish at 8 degrees

ST-UPC

- [+] LAN, premise and telecom applications
- [+] Fully compatible with all ST connector products
- [+] Bayonet style twist coupling
- [+] 2.5 mm zirconia ceramic ferrule
- [+] Keyed for repeatable connections

*Call your FiberSource Representative for cable type availability. Some variations may have limited availability or may be subject to minimum order quantity requirements.

FiberSource | Patchcords & Pigtails



Ordering Guide

For More Information Contact Us at sales@fibersource.net or 888.342.3776.

Patchcord, Pigtails and OSP 1F Drop Cables

1 Family	2 Fiber Type	3 Cable	4 Flame Rating	5 Cable Diameter	6 Fiber Count	7 First Connector	8 Second Connector	9 Length	10 Length Units
P=Pigtail J=Jumper	A=ESM B=ESMBB C=62.5 STD D=50 STD E=50 10GBE F=BBXS Blue Jkt G=BBXS Yellow Jkt* H=62.5 HC	A=Simplex B=Duplex Zip C=3mm DX Round Round I=1F Dielectric Drop J=1F Toneable Drop	I=Indoor/Outdoor O=Outdoor P=Plenum R=Riser Z=LSZH	A=.9mm B=1.6mm C=2.0mm E=3.0mm F=NA	01,02	A=SCU B=SCA C=FCU D=FCA E=LCU F=STU G=OSP SCA H=OSP SCU I=LCA J=MU K=E2000 L=E2000A	A=SCU B=SCA C=FCU D=FCA E=LCU F=STU G=OSP SCA H=OSP SCU I=LCA J=MU K=E2000 L=E2000A	Length 0000- 9999	F=Feet M=Meters
X	X	X	X	X	XX	X	X	XXXX	X

CONFIGURATION QUESTIONS FOR PATCHCORD

1. Are connectors on one end or both ends?

- P Pigtail
- J Jumper

2. What is the Fiber Type?

- A Enhanced Singlemode (ESM)
- B ESMBB BendBright
- C 62.5mm Standard
- D 50mm Standard
- E 50 10GBE
- F BendBright^{®XS} with Blue Jacket (Standard)
- G BendBright^{®XS} with Yellow Jacket
- H 62.5mm Capacity

3. What is the Cable Type?

- A Simplex
- B Duplex Zip
- C Duplex Round 3mm

4. What is the Flame Rating?

- R Riser
- P Plenum
- Z Low Smoke Zero Halogen

5. What is the Cable OD; or Unit OD in DX Zip?

- A 0.9mm
- B 1.6mm
- C 2.0mm
- D 3.0mm

6. What is the Fiber Count?

- 01 Simplex
- 02 Duplex

7. What is the First Connector Type?

- A SCU
- B SCA
- C FCU
- D FCA
- E LCU
- F STU
- I LCA
- J MU
- K E2000
- L E2000A

8. What is the Second Connector Type?

- A SCU
- B SCA
- C FCU
- D FCA
- E LCU
- F STU
- I LCA
- J MU
- K E2000
- L E2000A

9. What is the Length?

- 10000-9999 Length for Cable

10. What is the Unit of Measure?

- M Meter
- F Feet

*Call your FiberSource Representative for cable type availability. Some variations may have limited availability or may be subject to minimum order quantity requirements.

FiberSource | Precision Connectivity Solutions

www.fibersource.net

sales@fibersource.net

888.342.3776



7034 Augusta Road, Greenville, South Carolina 29605 USA / International +1 864.277.7200
Issue Date: 6.12.2009 V3 / FSGR326