

Zirconia Ceramic Sleeves



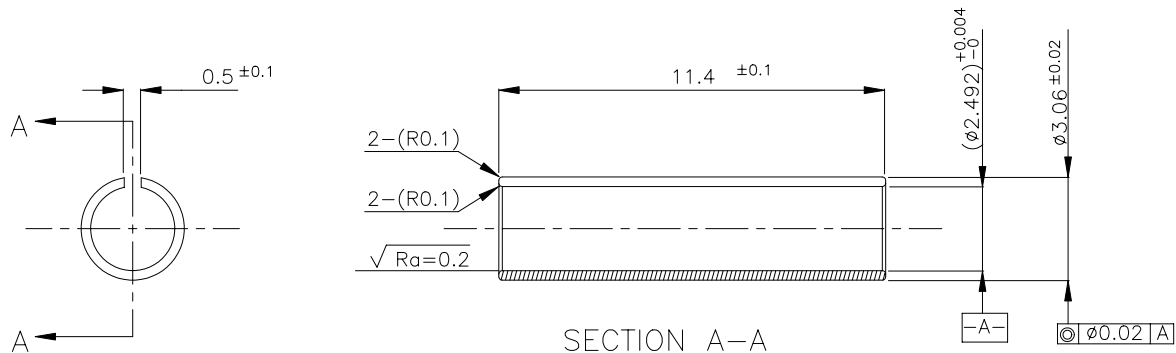
Features

- High Quality Brand Sleeves
- For PC or APC Connector Adapter Applications
- Various Lengths Available

Sleeve, Split, Zirconia Ceramic

ϕ 2.5 mm X 11.4 mm long
 ϕ 2.5 mm X 10.1 mm long

Part Number: FS00011
Part Number: FS00317



NOTES:

1. ID INSPECTION: PIN GAUGES
 ϕ 2.491mm AS GO GAUGE
 ϕ 2.497mm AS NO GO GAUGE
2. THE FORCE APPLIED WHILE PULLING OUT ONE PIN GAUGE SHALL BE BETWEEN 150 AND 450g, FROM THE STATE WHERE TWO PIN GAUGES HAVE BEEN INSERTED INTO THE SPLIT SLEEVE RESPECTIVELY FROM BOTH ENDS TO THE CENTER (11.4/2 FROM THE END) AND BUTTED TO EACH OTHER. INSPECTION PIN GAUGE IS TO BE ϕ 2.4990 \pm 0.0002mm ZIRCONIA FERRULE.
3. UNLESS OTHERWISE SPECIFIED ALL DIMENSIONS ARE IN MM.
4. ALL TOLERANCES ARE \pm 0.05 UNLESS OTHERWISE NOTED.

FiberSource supplies Non-Standard sleeves of different diameters and lengths such as:

- Split Sleeves with diagonal split.
- Solid Sleeves with or without a leading chamfer.

These sleeves are supplied according to customer specifications.