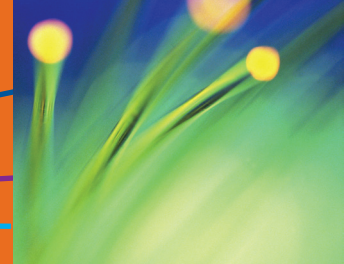


Patch&Splice Panel | 6732



The 6732 LGX Patch and Splice Rack Mount Panel provides cross-connect and splicing capability for up to 288 fibers. The panel combines the Patch and Splice Panel to provide patch and splice capability in one rack mount unit. An industry standard design makes this unit compatible with existing frames manufactured by other vendors for mix-and-match applications. This module can be installed in standard 19" or 23" frames in central offices, head-ends, customer premises, controlled environmental vaults or other remote locations requiring high connection density.

These patch and splice units typically come pre-loaded with pigtails routed between the patch panel and the splice panel. Standard, 12 fiber, 900um color coded, singlemode or multimode pigtails are terminated with TIA/EIA standard connectors including SC, FC, LC, and ST. Connectors are loaded into the patch panel and the pigtails are routed directly into the splice trays inside the splice bay. The complete unit is packaged and shipped completely ready for rack-mounting and cable splicing.

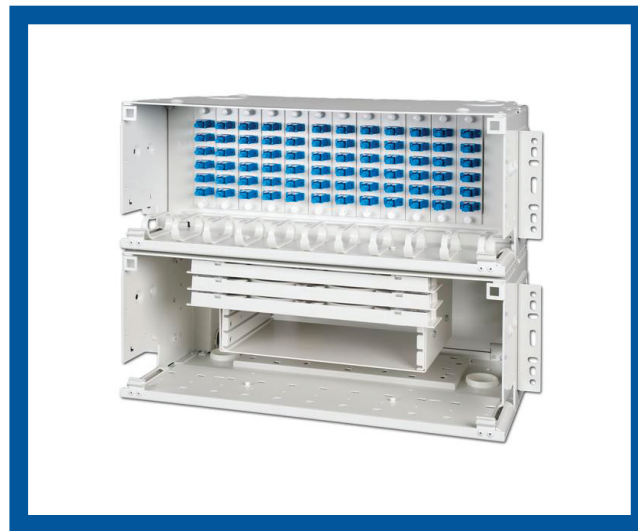
Features & Benefits

Features

- [+] High density
- [+] Maximum bend radius control at all cable exit ports; integrated fiber management
- [+] Accepts all standard connector and cable types
- [+] Available with the 900 um color-coded pigtaills running directly from the patch panel into each splice tray

Benefits

- [+] Quick and easy to use
- [+] Uses minimum rack space
- [+] Excellent cable management
- [+] Compatible with existing equipment from other manufacturers
- [+] Saves on installation time and cost
- [+] Made in the U.S.A.



Universal LGX Patch and Splice Panel

*Call your FiberSource Representative for availability. Some variations may have limited availability or may be subject to minimum order quantity requirements.

FiberSource | Precision Connectivity Solutions

www.fibersource.net

sales@fibersource.net

888.342.3776



7034 Augusta Road, Greenville, South Carolina 29605 USA / International +1 864.277.7200
Issue Date: 3.11.2010 V4 / FS6732

Patch and Splice Panel | 6732



Ordering Guide

For More Information Contact Us at sales@fibersource.net or 888.342.3776.

6732(14) (Patch & Splice Rack Mount) =H (6 trays MAX)

6732(16) (Patch & Splice Rack Mount) =I (6 trays MAX)

6732(18) (Patch & Splice Rack Mount) =J (9 trays MAX)

1 Family	2 Stub or Pigtail & Fiber Type	3 Mounting	4 Adapter Style	5 Adapter Quantity	6 Pigtail or Fiber Count	7 Cable Type	8 Tray Count	9 Cable Length	10 Measurement
H,I,J	D=ESM pigtail E=62MM pigtail F=50MM pigtail G=BBXS bl pigtail H=BBXS ylw pigtail I=ESM 12F ribbon NA=X	Both 19" & 23"=A	A=SCU B=SCA C=ST D=FCU E=FCA F=LCU dx G=LCA dx I=SC MM dx J=SC MM K=ST MM L=SCU dx M=SCA dx NA=X	Count=000 NA=XXX MAX=144 or 108scdx	Count=002 to 288 NA=XXX	X=Pigtail or none	Count=00 NA=XX		M=Meters
X	X	A	X	XXX	XXX	X	XX	XXXX	X

CONFIGURATION QUESTIONS FOR PATCH & SPLICE RACK MOUNT UNITS

1. What is the Hardware Size

- H 7" Patch Box & 7" Splice Bay for up to 144 LC Pigtails & Splices: 96 SC Pigtails & Splices
- I 9" Patch Box & 7" Splice Bay for up to 144 Simplex Pigtails & Splices.
- J 9" Patch Box & 9" Splice Bay for up to 216 SC Pigtails & Splices or 288 LC dx Pigtails & Splices

2. What is the Fiber Type and Cable Configuration? Pigtails are Patch & Splice Only

- D Singlemode Pigtail
- E 62.5um MM Pigtail
- F 50um MM Pigtail
- G BendBright XS blue Pigtail
- H BendBright XS yellow Pigtail
- I 12F Ribbon Pigtail
- X No Cables or Pigtails

3. What is the Rack Width?

- A Mountable on Either 19" & 23"

4. What is the Adapter/Connector Style?

- A SCU
- B SCA
- C STU
- D FCU
- E FCA
- F LCU dx
- G LCA dx
- J SC MM
- K ST MM
- L SCU dx
- M SCA dx
- X No Adapters

5. What is the Adapter Quantity?

- 000 Max 144 or 108scdx
- XXX none on NA

6. What is the Pigtail Count?

- 002-288 Pigtail Cable Fiber Count
- XXX No Pigtails or Stubs
- X Pigtails or no Cable

8. What is the Splice Tray Count?

- 01-09 Number of 24F Splice Trays
- 06 Number of 48F Splice Trays for 12F Ribbon LC Pigs

9. What is the Pigtail Length?

- 0003 Standard Pigtail Length (M)

10. What is the Length of Measure?

- M Meter
- F Feet

*Call your FiberSource Representative for cable type availability. Some variations may have limited availability or may be subject to minimum order quantity requirements.

FiberSource | Precision Connectivity Solutions

www.fibersource.net

sales@fibersource.net

888.342.3776

