

# Building Distribution Cabinet | 6756(12) OSP



The 6756 NEMA 3 Rated Outside Plant Building Distribution Cabinet (OSP-12) is a wall-mounted unit with a pole mount option used to patch, or patch and splice optical fibers. It accommodates up to 12 connections and can use a wide range of connector types. The cabinet includes a lockable door. Buffer tubes, ribbons, and pigtails can be neatly coiled beneath the splice trays and routed to the adaptor plate(s). The OSP-12 includes a back-plate that supports the cable tie down, internal fiber management, splice trays, and an adaptor plate. The entire back-plate can be removed from the wall-mounted box and placed on a table for comfortable splicing. This is a welcome improvement to the old style wall-mount boxes that require splicers to work on their feet within the confines of a box.

These patch and splice units typically come pre-loaded with pre-terminated pigtails routed between the adaptor plate and the splice trays. Standard, 12 fiber, 900um color coded, singlemode or multimode pigtails are terminated with TIA/EIA standard connectors including FC, LC, SC and ST. Connectors are loaded into the adaptors and the pigtails are routed directly into the splice trays.

These panels are also available with factory terminated, pre-loaded optical cables. FiberSource's standard optical cables\* may be ordered in specific lengths and terminated with connectors.

The patch and splice units or the pre-stubbed patch units are packaged and shipped completely ready for wall-mounting and cable splicing.

## Features & Benefits

### Features

- [+] Removable back-plate enabling cable tie down, splice trays and adaptor plate to be removed from the box and placed on a table
- [+] Grounding lugs allow cables with metallic components to be grounded
- [+] High density, compact and uncrowded
- [+] Available pre-terminated and pre-loaded
- [+] 304 Stainless steel powder coat
- [+] Accepts all standard cable and connector types
- [+] NEMA 3 Rated
- [+] Gasketed Lockable cover
- [+] Pole Mount Option
- [+] Made in the U.S.A.



6756-12 Open



6756-12 Closed

### Benefits

- [+] Easy to use
- [+] More comfortable splicing
- [+] Promotes ease of use and safety
- [+] Saves space and cost
- [+] Compatible with existing plant

\*Call your FiberSource Representative for type and availability. Some variations may have limited availability or may be subject to minimum order quantity requirements.

FiberSource | **Fiberoptic Connectivity Solutions**

[www.fibersource.net](http://www.fibersource.net)

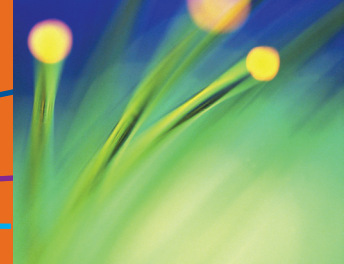
[sales@fibersource.net](mailto:sales@fibersource.net)

**888.342.3776**



7034 Augusta Road, Greenville, South Carolina 29605 USA / International +1 864.277.7200  
Issue Date: 1.18.2011 V3 / FSOSPBDC

# Building Distribution Cabinet | 6756-12



## Ordering Guide

For More Information Contact Us at [sales@fibersource.net](mailto:sales@fibersource.net) or 888.342.3776.

### Building Distribution Cabinet

6756-12 (Wall Mount)= (12 Splices/1 tray MAX) Dim: 7.5w"x12.2h"x3d"

1 Family	2 Fiber Type & Cable stub/Pigtail	3 Pole Mount	4 Adapter Style	5 Adapter Quantity	6 Pigtail or Fiber Count	7 Stub Cable Type	8 Tray Count	9 Cable Length	10 Measurement
6756(12)	A=ESM Stub B=MM62 Stub C=MM50 Stub D=ESM pigtail E=62MM pigtail F=50MM pigtail G=BBXS bl pigtail H=BBXS ylw pigtail NA=X	X=NA P=Bracket	A=SCU B=SCA C=ST D=FCU E=FCA F=LCU DX G=LCPC DX H=SCPC MM I=STPC MM J= Future K= Future NA=X	Count=000 NA=XXX MAX=12	Count=000 NA=XXX MAX=12	A=LT B=IOLT OFR C=TB OFR D=TB OFP E=NSTD F=IOLT OFP G=Diel Rbn OFR X= None	Count=00 NA=X	Length=0000 NA=XXXX	Feet=F Meters=M NA=X
X	X	X	X	XXX	XXX	X	XX	XXXX	X

## CONFIGURATION QUESTIONS FOR PATCH & SPLICE WALL MOUNT UNITS

### 1. What is the Hardware Size?

6756(12) 12F (max) wall mount patch and splice box

- H SCPC MM  
 J STPC MM  
 X No Adapters

### 2a. What is the fiber type?

Enhanced Singlemode  
 62.5um standard Multimode  
 50um standard Multimode  
 BendBright<sup>XS</sup> Singlemode

### 5. What is the Adapter Quantity?

- 001-12 Adaptor Count  
 XXX No Pigtails or Stubs

### 2b. What is the cable configuration?

Stubbed cables are patch only  
 Pigtails are Patch & Splice only

- A Singlemode Cable Stub  
 B 62.5mm Cable Stub  
 C 50mm Cable Stub  
 D Singlemode Pigtail  
 E 62.5um MM Pigtail  
 F 50um MM Pigtail  
 G Bendbright<sup>XS</sup> Blue Pigtail  
 H Bendbright<sup>XS</sup> Yellow Pigtail  
 X No Cables or Pigtails

### 6. What is the Pigtail or Stubbed Cable Fiber Count?

- 001-12 Pigtail or Cable Fiber Count  
 XXX No Pigtails or Stubs

### 3. What is the Rack Width?

X No rack required for wall-mount units

### 7. What is the Connectorized Cable Stub Type?\*

- A OSP Loose Tube Non Armored  
 B Indoor/Outdoor Loose Tube Non Armored OFR  
 C Tight Buffer OFR  
 D Tight Buffer OFP  
 E Non-Standard Cable (Anything Not Listed)  
 F Indoor/Outdoor Loose Tube Non Armored OFP  
 G Dielectric Central Tube Ribbon OFR  
 X Pigtails or No Cable

### 4. What is the Adapter Style?

- A SCU  
 B SCA  
 C STU  
 D FCU  
 E FCA  
 F LCU DX  
 G LCPC MM DX

### 8. What is the Splice Tray Count?

- 01 Number of 12F Splice Trays

### 9. What is the Pigtail (3M Standard) or Stub Cable Length?

- 0000-9999 Length for Cable  
 0003 Standard Pigtail Length (M)

### 10. What is the Unit of Measure?

- M Meter  
 F Feet

\*Call your FiberSource Representative for type and availability. Some variations may have limited availability or may be subject to minimum order quantity requirements.

