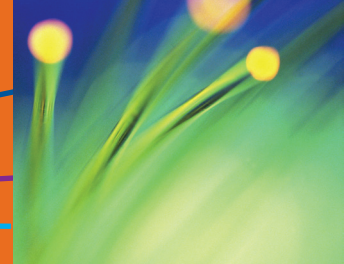


# Universal LGX Style Patch Panel | 6731



The 6731 Universal Patch Panel provides cross-connect capability for up to 144 fibers in a traditional bulkhead design and 288 fibers with duplex adapters. An industry standard design makes this unit compatible with existing LGX panels and frames manufactured by other vendors for mix-and-match applications. The module can be installed in standard 19" or 23" frames in central offices, customer premises, controlled environmental vaults or other remote locations requiring high connection density.

FiberSource patch panels are available with factory terminated, and pre-loaded cables. FiberSource's standard optical cables\* may be ordered in specific lengths, terminated with TIA/EIA standard connectors including SC, FC, LC, and ST and loaded into the patch panels and shipped as a single unit.

## Features & Benefits

### Features

- [+] High density
- [+] Maximum bend radius control at all cable exit ports; integrated fiber management
- [+] 19/23" Mounting Brackets
- [+] Accepts all standard connector and cable types
- [+] Available pre-stubbed

### Benefits

- [+] Quick and Easy to use
- [+] Uses minimum rack space
- [+] Excellent cable management
- [+] Compatible with existing equipment from other manufacturers
- [+] Saves on installation time and cost
- [+] Made in the U.S.A.



Universal LGX Patch Panel

\*Call your FiberSource Representative for cable type availability. Some variations may have limited availability or may be subject to minimum order quantity requirements.

FiberSource | Precision Connectivity Solutions

[www.fibersource.net](http://www.fibersource.net)

[sales@fibersource.net](mailto:sales@fibersource.net)

888.342.3776



7034 Augusta Road, Greenville, South Carolina 29605 USA / International +1 864.277.7200  
Issue Date: 3.04.2009 V2 / FS6731

# Universal LGX Style Patch Panel | 6731



## Ordering Guide

For More Information Contact Us at [sales@fibersource.net](mailto:sales@fibersource.net) or 888.342.3776.

6731(7) (Patch Only Rack Mount) 7" 4U = A

6762(9) (Patch Only Rack Mount) 9" 5.1U = B

1 Family	2 Stub or Pigtail & Fiber Type	3 Mounting	4 Adapter Style	5 Adapter Quantity	6 Stub Cable Fiber Count	7 Stub Cable Type	8 Tray Count	9 Cable Length	10 Measurement
A, B	A=ESM Stub B=MM62 Stub C=MM50 Stub D= 10GMM	A= Both 19" & 23"	A=SCU B=SCA C=ST D=FCU E=FCA F=LCU dx G=LCA dx I=SC MM dx J=SC MM K=ST MM L=SCU dx M=SCA dx NA=X	Count=000 NA=XXX MAX= 216 SC or 288 LCDX	Count=000 NA=XXX	A=LT B=IOLT OFR C=TB OFR D=TB OFP E=NSTD F=IOLT OFP G=DieI Rbn OFR X=none	NA=XX		F=Feet M=Meters NA=X
X	X	A	X	XXX	XXX	X	XX	XXXX	X

## CONFIGURATION QUESTIONS FOR PATCH ONLY RACK MOUNT UNITS

### 1. What is the Hardware Size

- A 7" Patch Box for up to 96 Single or Duplex Adapters (6731(7))
- B 9" Patch Box for up to 144 Single Adapters, or 144 LCdx - 288F, or 108 SCdx - 216F (6731(9))

### 2. What is the Fiber Type and Cable Configuration?

- A Singlemode Cable Stub
- B 62.5mm Cable Stub
- C 50mm Cable Stub
- D 10G MM
- X No Cables or Pigtails

### 3. What is the Rack Width?

- A Mountable on Either 19" & 23"

### 4. What is the Adapter Style?

- A SCU
- B SCA
- C STU
- D FCU
- E FCA
- F LCU dx
- G LCA dx
- J SC MM
- K ST MM
- L SCU dx
- M SCA dx
- X No Adapters

### 5. What is the Adapter Quantity?

### 6. What is the Stubbed Cable Fiber Count?

- 002-288 Cable Fiber Count
- XXX No Pigtails or Stubs

### 7. What is the Connectorized Cable Stub Type?\*

- A OSP Loose Tube Non Armored
- B Indoor/Outdoor Loose Tube Non Armored OFR
- C Tight Buffer OFR
- D Tight Buffer OFP
- E Non-Standard Cable (Anything Not Listed)
- F Indoor/Outdoor Loose Tube Non Armored OFP
- G Dielectric Central Tube Ribbon OFR
- X No Cable

### 8. What is the Splice Tray Count?

- XX No Splice Trays With Patch Only Units

### 9. What is the Stub Cable Length?

- 0000-9999 Length for Cable

### 10. What is the Unit of Length?

- M Meter
- F Feet

\*Call your FiberSource Representative for cable type availability. Some variations may have limited availability or may be subject to minimum order quantity requirements.

